



BADRUTT'S PALACE
ST. MORITZ SWITZERLAND

The Tower Penthouse Apartment



The Tower

AN ELEVATED WAY TO EXPERIENCE ST. MORITZ

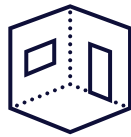
Spread across three stories, The Tower Penthouse Apartment offers four exquisite bedrooms, each with its own design and en suite bathroom. Unwind in the elegant living room, entertain guests with a fully equipped kitchen and dining area, or retire to the sitting room with your favourite read. For one of the most exceptional views in St. Moritz, you'll be drawn to the private allure of two tower balconies.



4 BEDROOMS



MAX 8 GUEST



317 SQM
3412 SQFT



TRANSFER
(SAMEDAN)



4 BATHROOMS



FULL KITCHEN



BUTLER
SERVICE



LIQUOR BAR



3D TOUR





Bask in the authentic alpine atmosphere of Engadin pinewood furniture, beautifully complemented by ornate wooden paneling. From its spacious rooms and sweeping views to thoughtfully considered details, memories of The Tower Penthouse Apartment will remain with you long after your stay.



Be awe-inspired by panoramic views over Lake St. Moritz, which can be enjoyed from above as you relax in the superior warmth and comfort of your one-of-a-kind living room.

Heavenly views over st. moritz



Living room





Master bedroom



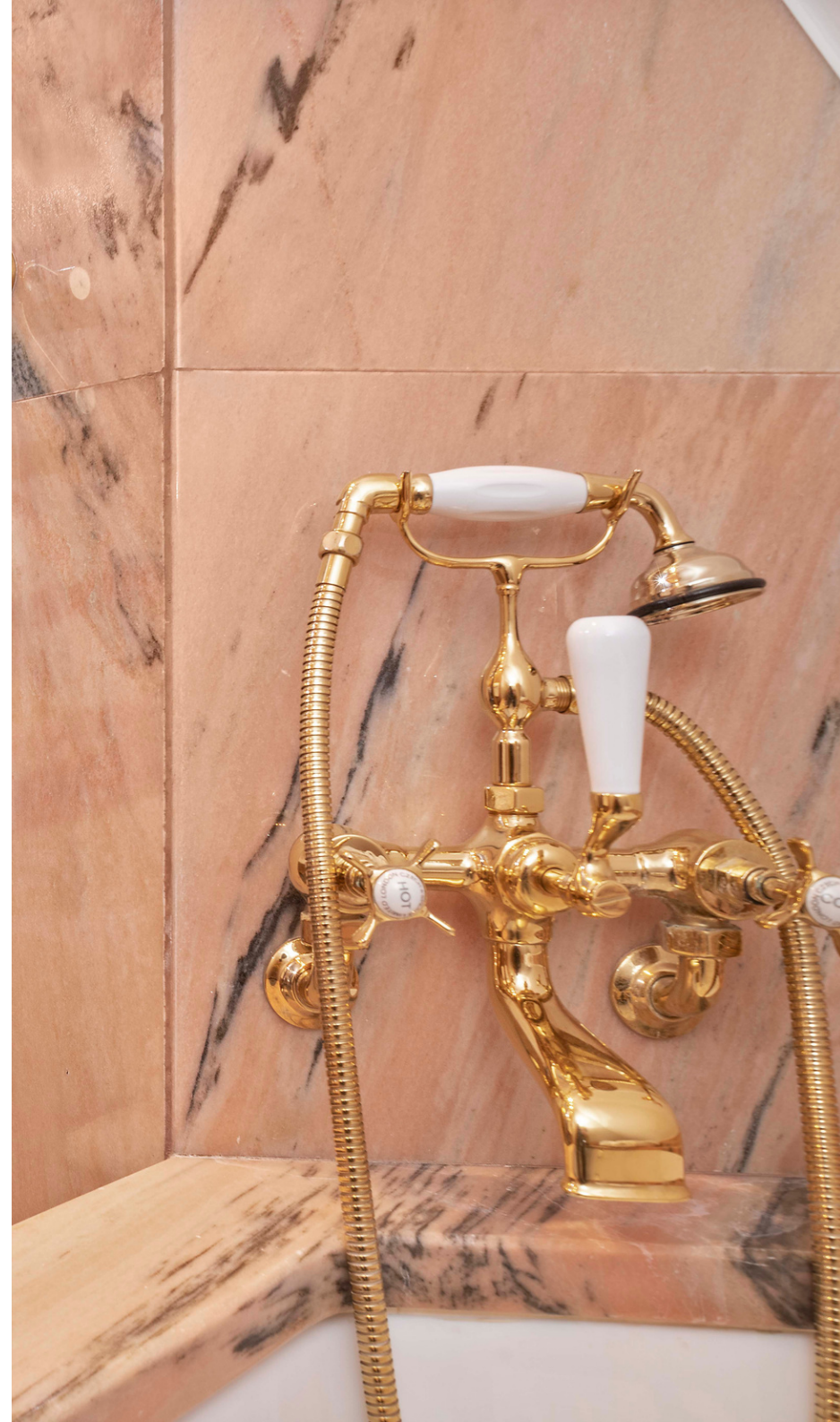
Located at the top of the tower, the master bedroom offers mesmerizing views out towards the glistening lake and picturesque village. Bathed in stillness, tranquility and natural light, it's the perfect place to retreat to after a day on the slopes.

Bedrooms



The Tower lets you spend precious time with those who matter. Luxuriate in the perfect amount of space and intimacy with three additional rooms, each with its own en suite bathroom.





Dining



Unleash your creativity in the fully equipped kitchen or have your cuisine of choice expertly prepared by a private Chef and finely arranged according to your wishes.

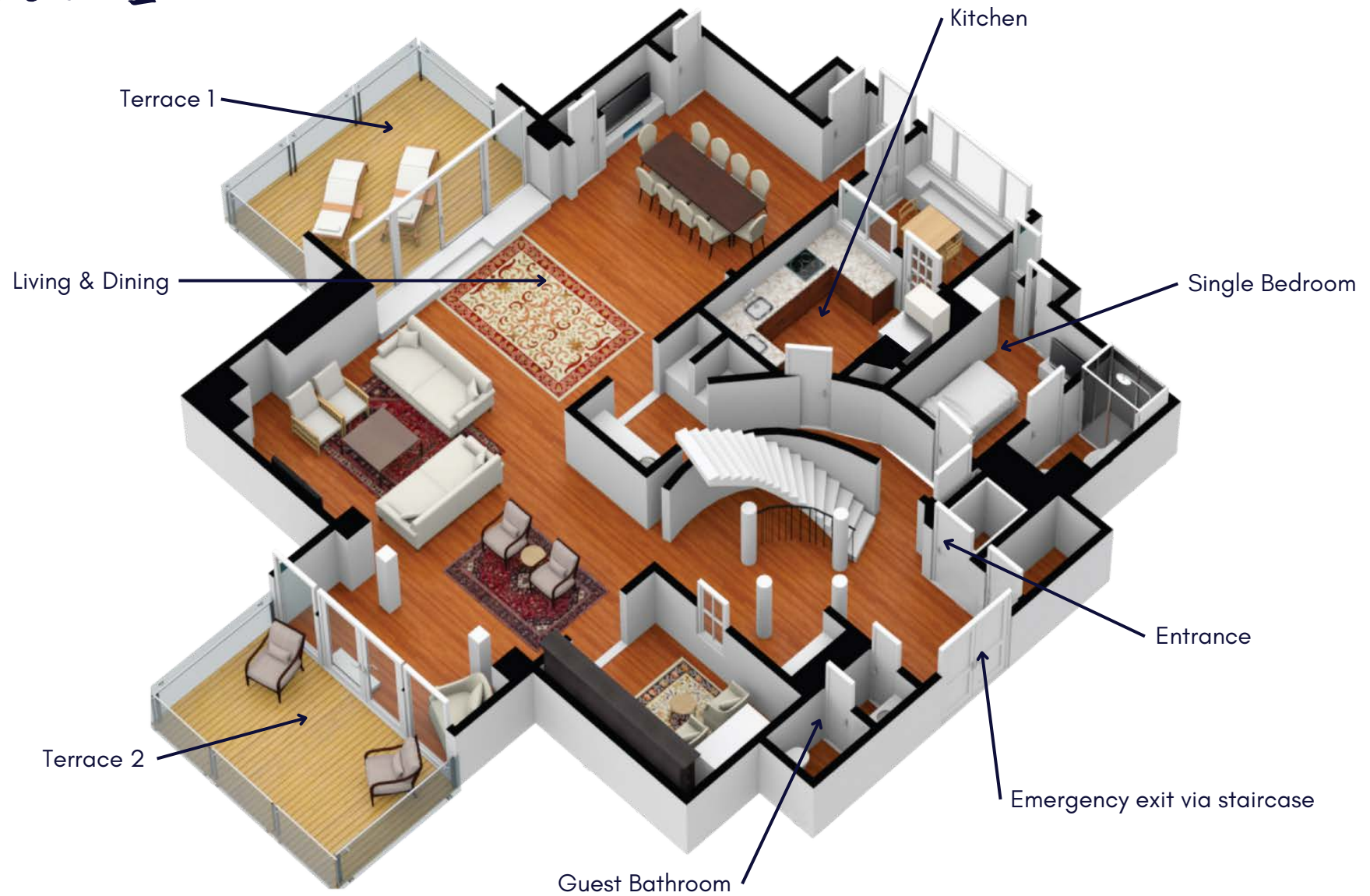
Floorplans

Your home away from home is set out with a reading room, living room, kitchen and dining room on the first floor, along with a single staff room with its own bathroom and a separate guest bathroom. On the second floor are three bedrooms, each with en suite bathrooms, and on the third floor you'll find the impeccable master bedroom with its exceptional bird's-eye view.

The first-floor room can host seated events for up to 30 guests, offering the quintessence of Alpine style with spectacular views and an inviting Engadine ambience.

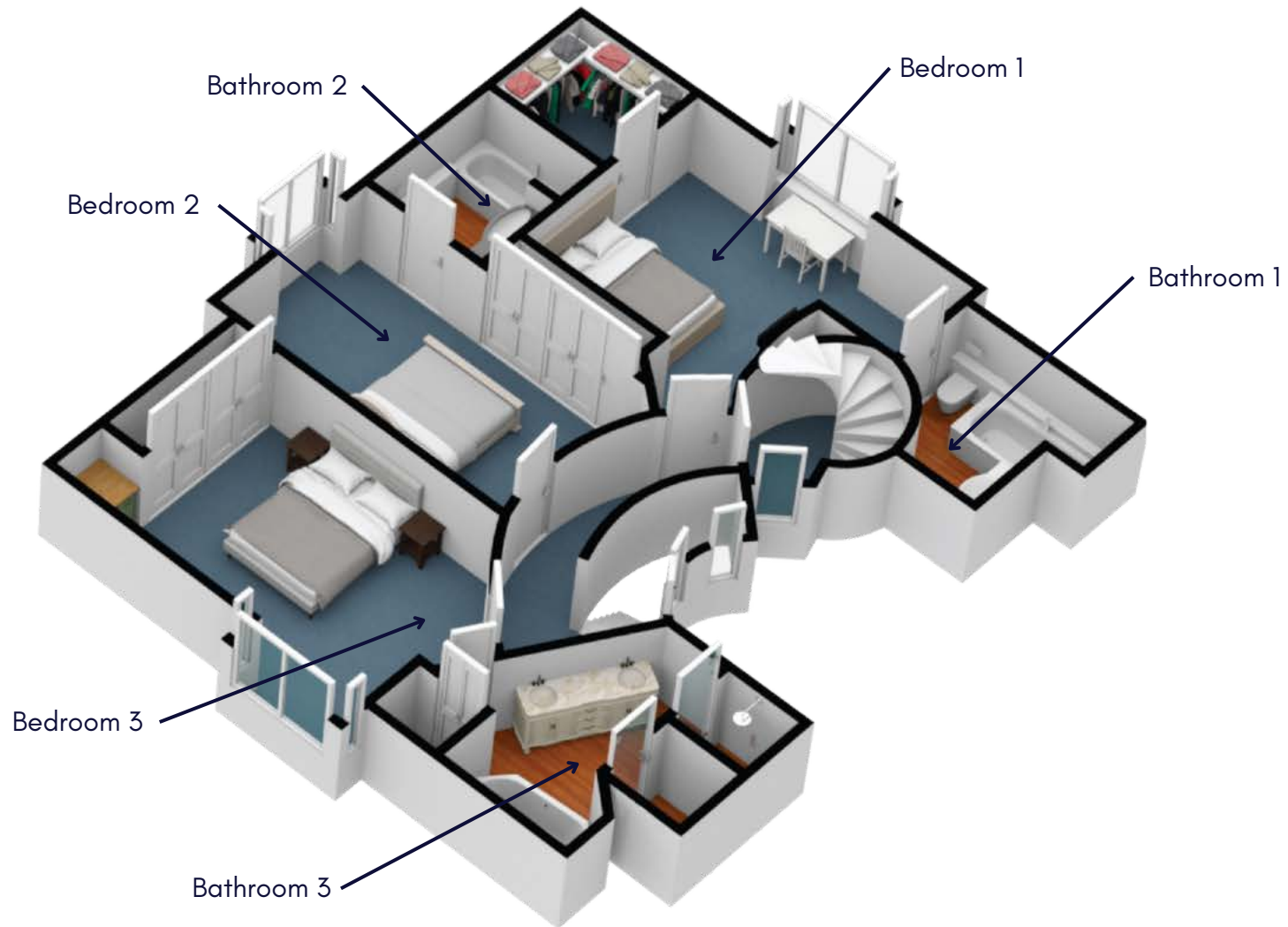


Floor 1



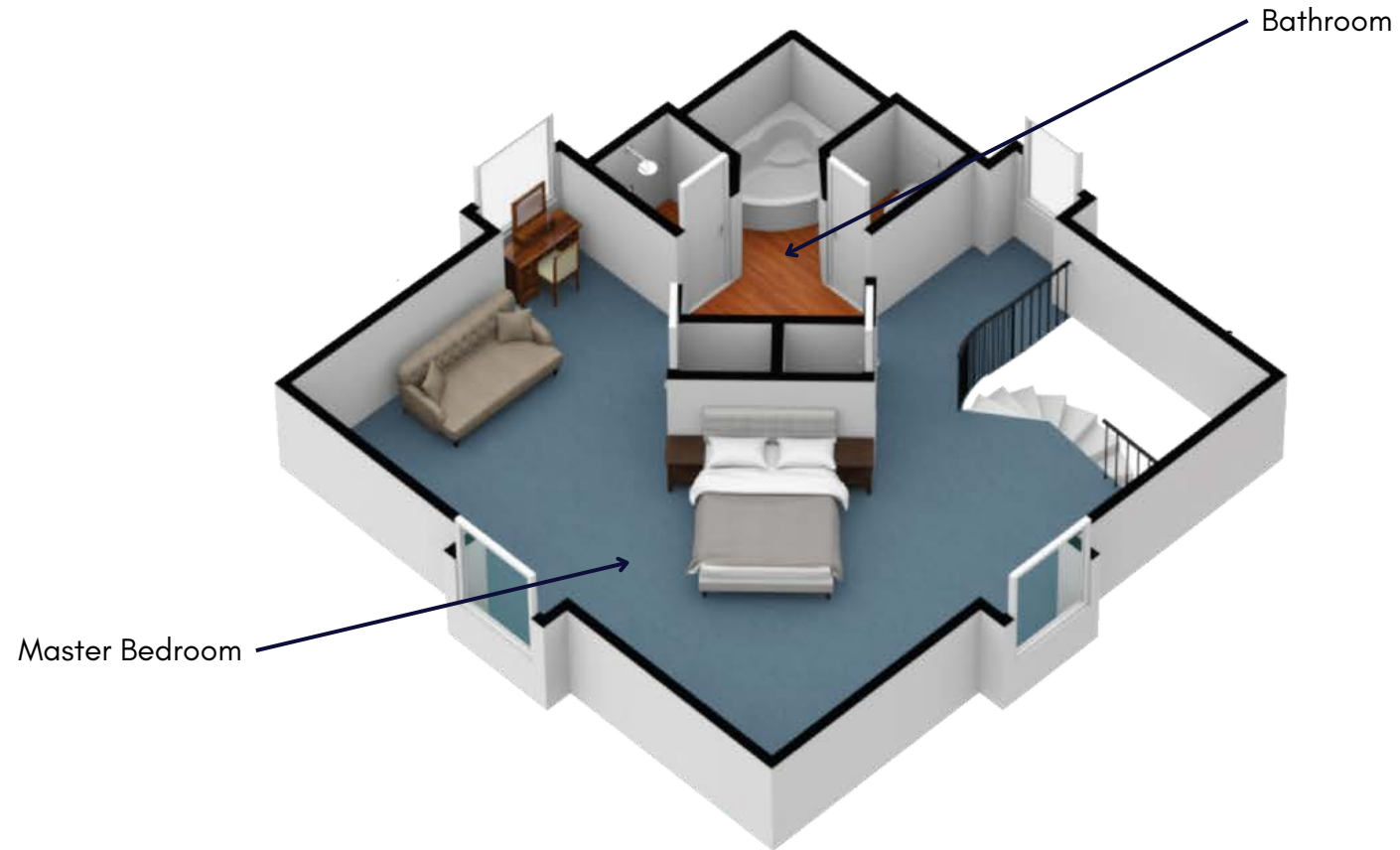
136.7 square meters (1,471 square feet)

Floor 2



90.9 square meters (978 square feet)

Floor 3



64.8 square meters (698 square feet)

FAQs

Suite Access

Access The Tower Penthouse Apartment from the hotel's seventh floor by private elevator. Please note there is no stair access.

Accessibility

The Tower Penthouse Apartment is not accessible by wheelchair due to the number of stairs to reach each room. For wheelchair-accessible or pushchair-friendly accommodation, we recommend the Hans Badrutt suite, our reservations team will be happy to provide further information.

Private Chef

Private dining can be prepared in the Palace kitchen. It is not currently possible to bring your own private chef into The Tower Penthouse Apartment, however we can certainly organise a chef from the hotel.

Extra Beds

Please note that no extra beds can be added.

Storage

The Tower Penthouse Apartment has limited storage space. Nevertheless, our staff will store any surplus items in a suitable manner.



BADRUTT'S PALACE
ST. MORITZ SWITZERLAND

Reservations

For any further information, please contact: reservations@badruttspalace.com or +41 81 837 1100.

The Tower Penthouse Apartment can also be booked online. Choose your preferred dates using the following link to instantly discover availability and rates that suits you best.

[BOOK YOUR STAY HERE](#)

We look forward to welcoming you here at Badrutt's Palace!

Badrutt's Palace Hotel, Via Serlas 27, 7500 St. Moritz, Switzerland

www.badruttspalace.com